

How to replace AD-DC power supply module for SheevaPlug GTI-2010.04.24

Warning:

Care must be taken intensively while doing the replacement of the AC-DC power module and be sure to remove the plug from AC wall outlet at least 20 minutes before replacement.

1. Remove 4 rubber stands.



2. Remove AC plug by pushing it outwardly



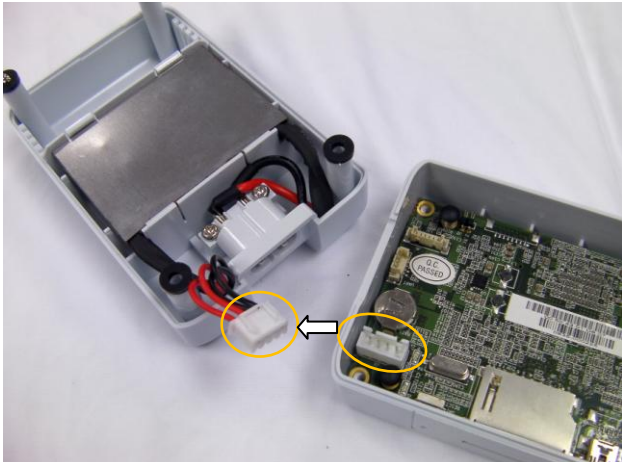
3. Remove 4 screws



4. Separate upper and lower enclosure



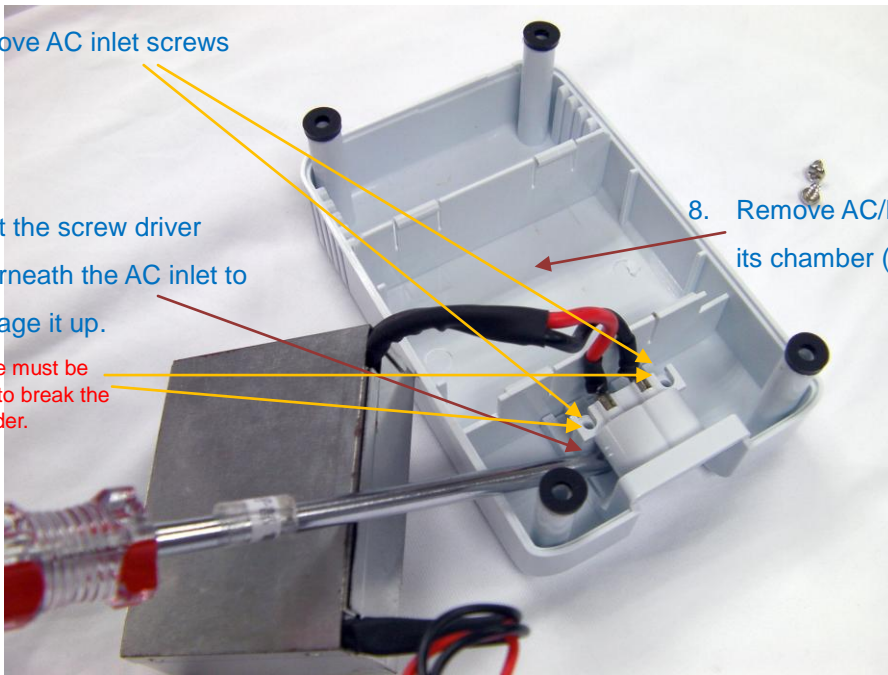
5. Remove DC 5V power header.



6. Remove AC inlet screws

7. Insert the screw driver underneath the AC inlet to leverage it up.

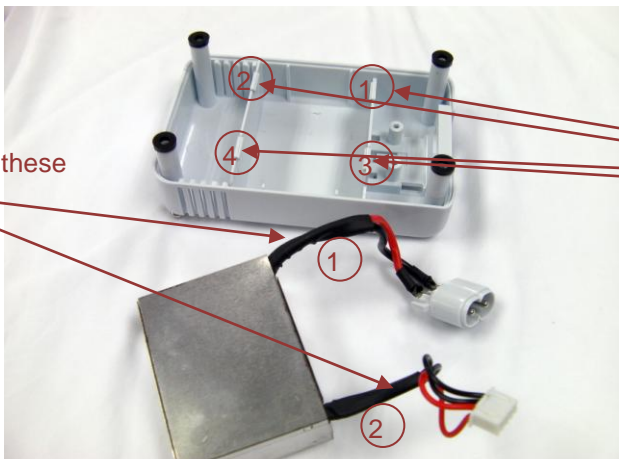
Note: Care must be taken not to break the screw holder.



8. Remove AC/DC module out of its chamber (see below)

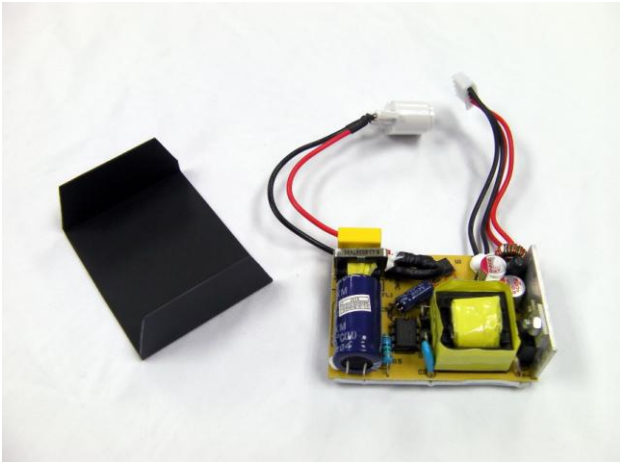
8. Remove AC/DC module out of its chamber

b. Pull and lift these cables

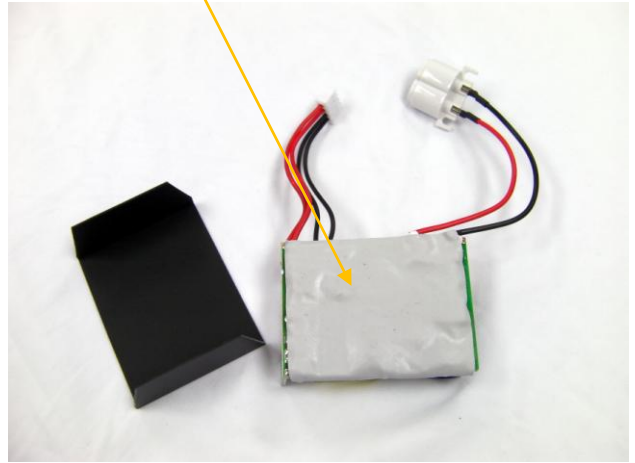


a. Push away these locking pieces in sequence

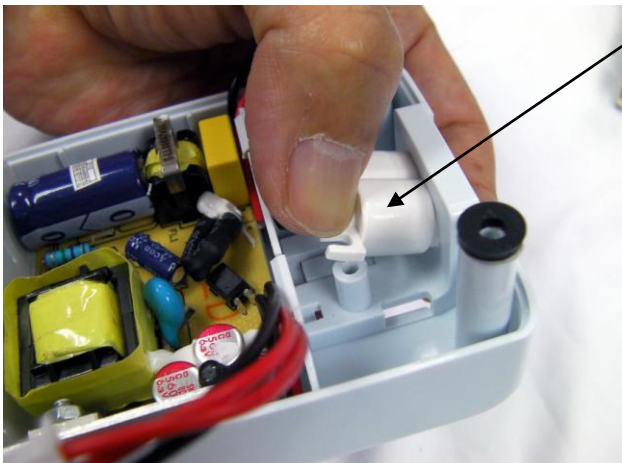
9. Prepare a new AC-DC module.



Note: Silicon pad already applied to the solder side.



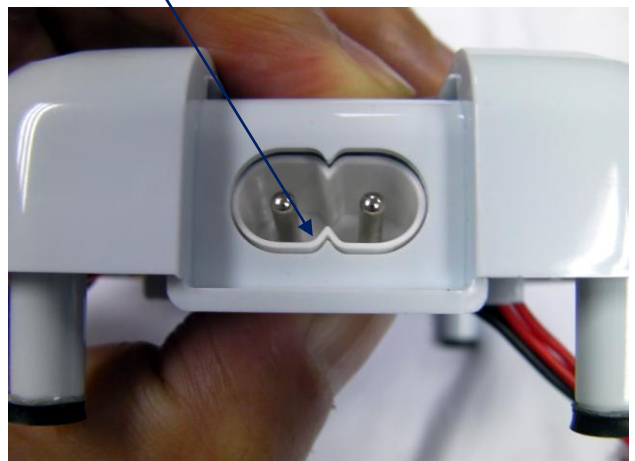
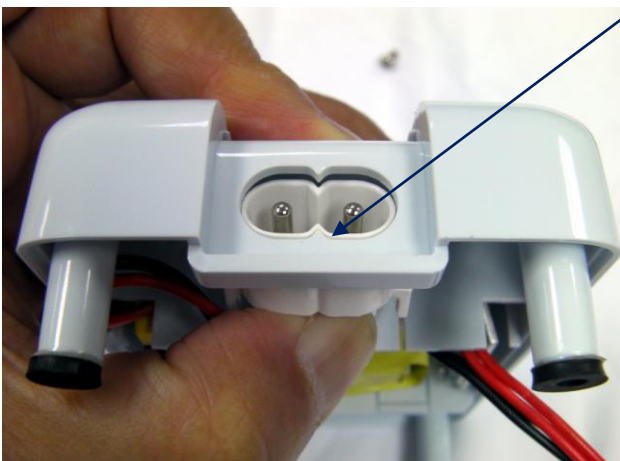
10 Put in the AC-DC module



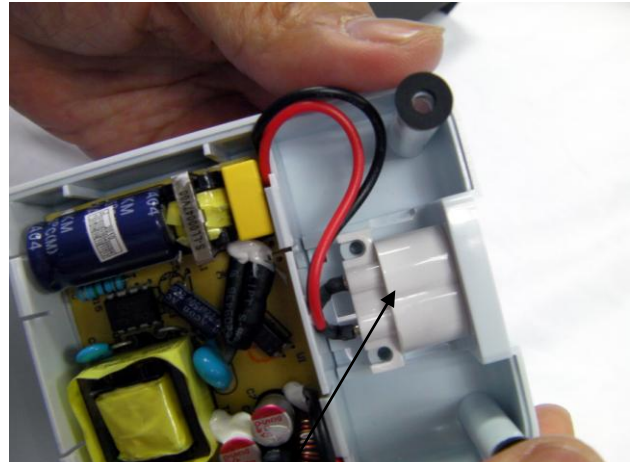
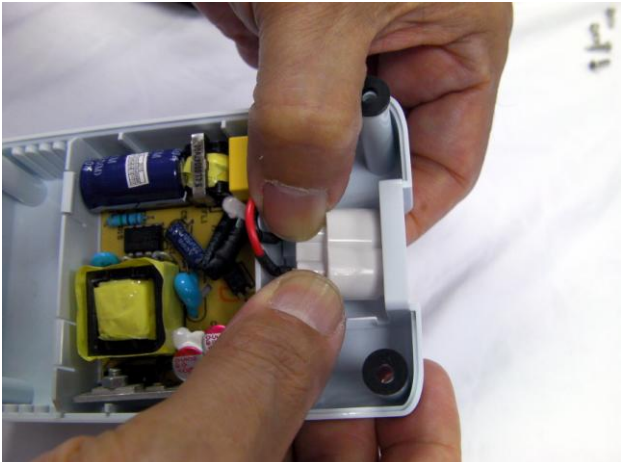
11. Hold the AC inlet this way.

12 This triangle must be aligned precisely first.

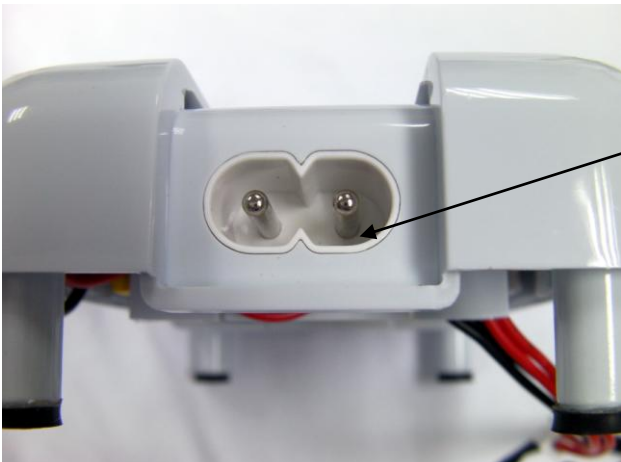
Note: This is a little bit tricky but very crucial



13 Press it down with both your thumbs

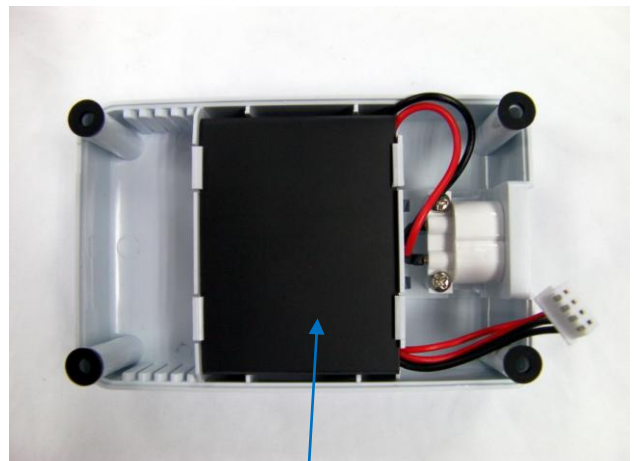
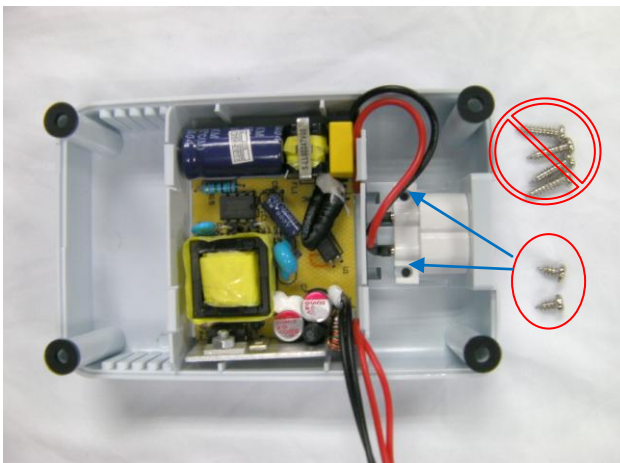


14. Click to its position



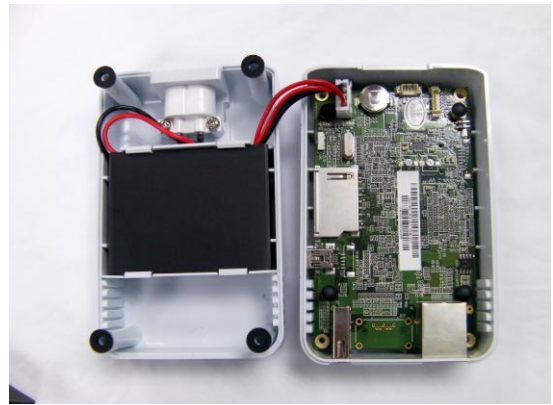
15. Finished picture

16. Screw up

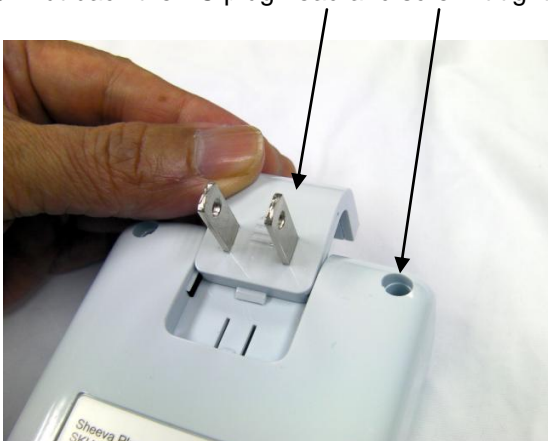


17. Put in the insulation cover

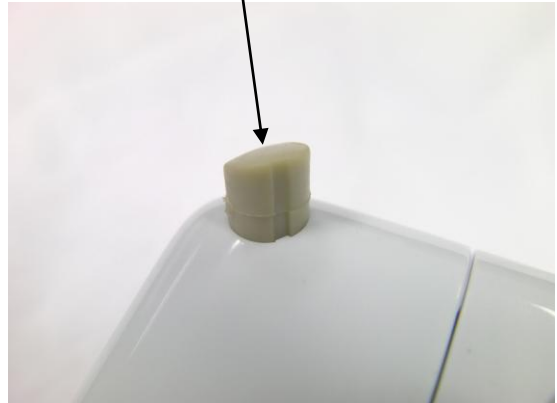
18. Insert back the DC power cable header



19. Put back the AC plug head and screw it tight



20. Put back the rubber stands



21. Completed!



=== End Of File ===